

HOW TO USE YOUR

BROWNIE

CAMERA

FLASH II

 **BROWNIE** 
WWW.BROWNIECAM.COM



Get to know your camera



- 1 CATCH : *lift to open the camera*
- 2 VIEWFINDER : *for horizontal pictures*
- 3 VIEWFINDER : *for vertical pictures*
- 4 CLOSE-UP SLIDE : *pull out for close-up pictures from 5 to 10 feet. Press in for subjects further away than 10 feet*
- 5 CONTROL LEVER : *set to 'I' for instantaneous snapshots, and 'B' for brief-time exposures*
- 6 CAMERA LENS : *keep free of dust or finger-prints*
- 7 WINDING KEY : *turn to wind the film*
- 8 SHUTTER BUTTON : *for snapshots press slowly inwards ; for brief-time exposures follow special instructions*
- 9 FLASHHOLDER CONNECTION : *use Brownie Flashholder (see TO TAKE FLASH PICTURES)*

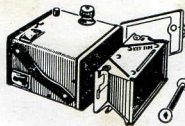
How to load

Open the back of the camera by lifting the catch. Draw out the winding key as far as it will go. Withdraw the inside of the camera—called the film holder. Remove the empty spool.

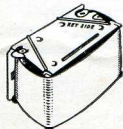
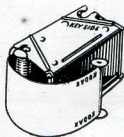
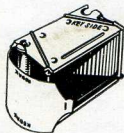
Place the new spool of film in the holder, in the position illustrated. Break the paper band and unwind about four inches of paper, keeping the rest of the film tightly wound.

Take the empty spool, insert the end of the paper into the long slot and wind three turns on to the spool, with the black side of the paper towards the inside. Be sure that the paper winds evenly between the spool flanges.

Draw the paper over the rollers and insert the spool at the end marked 'KEY SIDE'. Replace the holder, with 'KEY SIDE' towards the winding key of the camera. Close the camera back. While turning, press in the winding key until it engages the spool; keep turning until a hand appears in the red window. Now wind on slowly until the figure '1' is centred. Wind to the next number after each picture.



Load your camera in shade, never in direct sunlight or strong artificial light. Use only size 620 film; Kodak Verichrome Pan Film is recommended.



and unload

After the last picture (No. 8), wind until the end of the paper passes the red window.

Draw out the winding key, open the catch securing the camera back and withdraw the film holder.

Remove the exposed film, holding it securely to prevent it unrolling. Fold under the end of the paper and seal it with the gummed paper band.

Follow these simple picture-making rules

SNAPSHOTS

- 1 Set the Control Lever to 'I' (instantaneous) for all daylight snapshots.
- 2 Look in the red window to make certain that you have advanced the film.
- 3 Check the distance. Do not photograph subjects nearer than 10 feet from the camera unless you use the close-up slide (see opposite).
- 4 Check the light. The subject can be in bright or hazy sunlight, between an hour after sunrise and an hour before sunset.
- 5 Compose the picture. Decide whether it should be horizontal or vertical. The viewfinder shows you what your picture will include.
- 6 Hold the camera steady. Camera shake will blur the picture. Press the shutter button inwards with a gentle squeezing action.

USING THE CLOSE-UP SLIDE

Close-up pictures add interest and variety to your album. Just pull out the close-up slide and stand between 5 and 10 feet from your subject. This will enable you to obtain attractive head-and-shoulder portraits, or detailed pictures of still-life subjects (flowers or architectural features, for instance). When sighting close-ups, keep the main subject well down in the viewfinder for vertical pictures, and to the left of centre for horizontal pictures, otherwise part of the subject may be cut off. Always return the slide after use.

BRIEF-TIME EXPOSURES

When there is not enough light for an ordinary snapshot, and you have no Brownie Flashholder with you, make a brief-time exposure. Place the camera on a table, or other firm support, and set the control lever to 'B'. Steady the camera and press in the shutter button slowly. The shutter will remain open for as long as the button is pressed. Exposure time will depend on the available light and cannot be given exactly. As a basis, try the following times using Kodak Verichrome Pan Film.*

Near sunrise or sunset, or in deep shade	$\frac{1}{2}$ to 1 second
Indoors near windows	2 to 4 seconds
Interiors lit by daylight	2 to 10 seconds

**With Kodak Tri-X Film these times can be halved.*

TO TAKE FLASH PICTURES

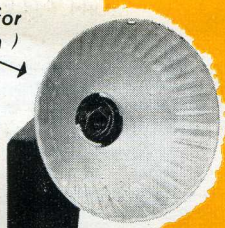
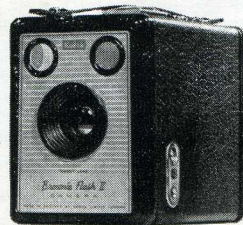
With the Brownie Flashholder fitted to your camera, a flashbulb will provide you with the necessary light source for taking pictures in very dull weather or after dark, indoors or outdoors. Before fitting the Flashholder, make sure there are two Eveready 915 or similar batteries correctly inserted in the Flashholder case (see instructions on tape). See that the control lever on the camera shutter is set to 'I'.

FITTING THE FLASHHOLDER

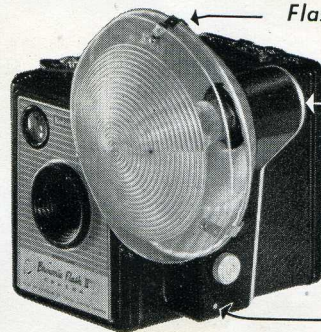
The Flashholder has a projecting pin and a captive knurled screw. Insert the pin into the lower of the two holes on the side of the camera opposite the shutter button. Tighten the captive screw. Electrical connections are made automatically.

NOTE : Do not insert the flashbulb until the Flashholder has been attached to the camera (see WHEN MAKING FLASHSNAPS).

(Flashguard removed for purpose of illustration)



Captive screw



Flashguard hinge

Ejector pin

Contact pin

WHEN MAKING FLASHSNAPS

Open the Flashguard, insert the selected flashbulb, and replace the guard over the reflector. This is a safeguard against the unlikely event of a flashbulb shattering when fired. You may now take your flash-snap simply by pressing the exposure button on the camera. Do not attempt to remove a fired flashbulb immediately with the fingers. Push the plunger at the rear of the reflector to eject the hot bulb, then unclip the Flashguard and allow the bulb to drop out. Never use the Flashholder in an explosive atmosphere.

You can expect to 'stop' subject movement that is not too fast for a normal daylight snapshot. This is a great advantage when photographing babies or animals.

Flash is useful even on the brightest summer day. As a 'fill-in', it will relieve hard shadows thrown by strong side lighting, or will bring out frontal detail in subjects which are strongly back-lit.

Make sure that mirrors and other bright surfaces will not reflect the flash back into the camera lens.

The table gives recommended flash-to-subject distances for various films and flashbulbs. If you keep within the limits, you will get well-exposed negatives suitable for printing or enlarging. Should you wish to stand even

closer to your subject (e.g., to improve the composition, or for portraits), you can halve the distances in the table if you drape a double thickness of white handkerchief over the Flashguard. Remember to pull out the close-up slide if standing nearer than 10 feet from your subject. Do not stand closer than 5 feet.

FLASH-TO-SUBJECT DISTANCES

FLASHBULB	VERICHROME PAN	TRI-X
P.F.I or G.E.C.I CAPLESS	6 feet (5-10 feet)	9 feet (5-16 feet)
P.F.5 or G.E.C.5 CAPLESS	10 feet (6-17 feet)	16 feet (9-28 feet)

In a small brightly furnished room (or using flash as a 'fill-in' in daylight) keep to the longer distances. With dark subjects in dark or large rooms, or for pictures out-of-doors at night, use the shorter distances.

VERICHROME PAN FILM

A universal panchromatic film of medium speed, of full colour sensitivity, specially suited to amateur photography by daylight or artificial light.

TRI-X FILM

A panchromatic film of very high speed. It is too fast for ordinary snapshots in summer sunshine and should be reserved for indoor snapshots by daylight or artificial light or for outdoor shots in dull weather or poor light.

GUARANTEE

Within a year after the purchase, any repair necessary to this Brownie Flash II Camera, due to a defect in materials or workmanship, will be made or, at our option, the camera will be replaced, without charge. No other warranty or guarantee, express or implied, shall be applicable to this equipment.

We are not responsible for loss of, or damage to, film or for any other loss, damage or inconvenience of any kind incident to, or occasioned by any defect in, or failure of equipment or for indirect, collateral or consequential damages.

In case of a defect, the camera should be sent directly, or through a Kodak dealer, to Kodak (Australasia) Pty. Ltd. It should be accompanied by a description of the trouble encountered and other available information regarding the camera, including the date and place of purchase.

KODAK (Australasia) PTY. LTD.

BRANCHES IN ALL STATES